

*Photos not actual size*

### Rod End Ball Joints • Male

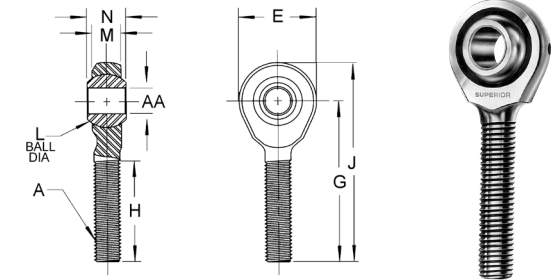
• **Bearing Raceway:**  
Locked in by annular groove-trunnion design.  
Made of fiber reinforced nylon.

• **Spherical Ball:**  
Precision made from selected low carbon steel-case hardened - file hard. Plated plus dichromate treated for corrosion resistance.

• **Outer Member (Housing):**  
Low carbon steel, plated plus dichromate treated for corrosion resistance.

• **Left Hand Thread:**  
Available with left hand thread in most sizes. Marked for easy user identification.

Only available fully assembled.



Auveco Part No.	Thread Size (A)	AA	E	G	H	J	L	M	N	Unit Pkg.	Thread
12268	10-32	.189	.625	1.250	.750	1.562	.438	.250	.312	1	R
12269		.191								1	L
12270	1/4-28	.250	.750	1.562	1.000	1.937	.516	.281	.375	1	R
12271		.252								1	L
12021	5/16-24	.3125	.875	1.875	1.250	2.312	.625	.344	.437	1	R
12272		.3145								1	L
12022	3/8-24	.375	1.000	1.937	1.250	2.437	.719	.406	.500	1	R
12273		.377								1	L
12485	7/16-20	.4395	1.125	2.125	1.312	2.687	.812	.437	.562	1	R
		.4375									
12023	1/2-20	.500	1.312	2.437	1.500	3.094	.938	.500	.625	1	R
12274		.502								1	L
12024	5/8-18	.625	1.500	2.625	1.625	3.375	1.125	.562	.750	1	R
12486	3/4-16	.752	1.750	2.875	1.750	3.750	1.312	.687	.875	1	R
		.750									

### Rod End Ball Joints • Female

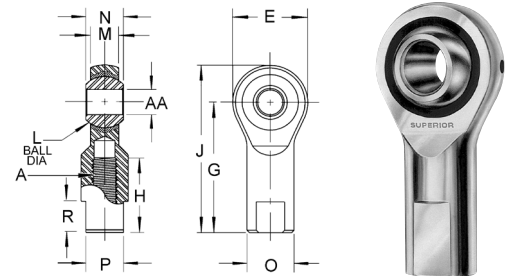
• **Bearing Raceway:**  
Locked in by annular groove-trunnion design.  
Made of fiber reinforced nylon.

• **Spherical Ball:**  
Precision made from selected low carbon steel-case hardened - file hard. Plated plus dichromate treated for corrosion resistance.

• **Outer Member (Housing):**  
Low carbon steel, plated plus dichromate treated for corrosion resistance.

• **Left Hand Thread:**  
Available with left hand thread in most sizes. Marked for easy user identification.

Only available fully assembled.



Auveco Part No.	Thread Size (A)	AA	E	G	H	J	L	M	N	O	P	R	Unit Pkg.	Thread
12025	10-32	.189	.625	1.062	.562	1.375	.438	.250	.312	.406	.312	.406	1	R
12276		.191											1	L
12026	1/4-28	.250	.750	1.312	.750	1.687	.516	.281	.375	.469	.375	.406	1	R
12277		.252											1	L
12027	5/16-24	.3125	.875	1.375	.750	1.812	.625	.344	.437	.500	.437	.500	1	R
12278		.3145											1	L
12028	3/8-24	.375	1.000	1.625	.937	2.125	.719	.406	.500	.687	.562	.562	1	R
12279		.377											1	L
12487	7/16-20	.4395	1.125	1.812	1.032	2.375	.812	.437	.562	.750	.625	.625	1	R
		.4375												
12029	1/2-20	.500	1.312	2.125	1.187	2.781	.938	.500	.625	.875	.750	.687	1	R
12280		.502											1	L
12281	5/8-18	.625	1.500	2.500	1.500	3.250	1.125	.562	.750	1.000	.875	.875	1	R
12488	3/4-16	.752	1.750	2.875	1.562	3.750	1.312	.687	.875	1.125	1.000	1.000	1	R
		.750												

## Rod End Ball Joints • Male with Stud

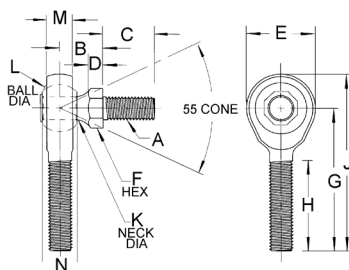
• **Bearing Raceway:**  
Locked in by annular groove-trunnion design.  
Made of fiber reinforced nylon.

• **Spherical Ball:**  
Precision made from selected low carbon steel-case hardened - file hard. Plated plus dichromate treated for corrosion resistance.

• **Outer Member (Housing):**  
Low carbon steel, plated plus dichromate treated for corrosion resistance.

• **Left Hand Thread:**  
Available with left hand thread in most sizes. Marked for easy user identification.

Only available fully assembled.



Auveco Part No.	Thread Size (A)	B	C	D	E	F	G	H	J	K	L	M	N	Unit Pkg.	Thread
12290	10-32	.437	.437	.156	.625	.312	1.250	.750	1.562	.189	.438	.250	.312	1	R
12292	1/4-28	.469	.562	.156	.750	.375	1.562	1.000	1.937	.250	.516	.281	.375	1	R
12293														1	L
12030	5/16-24	.531	.687	.187	.875	.437	1.875	1.250	2.312	.312	.625	.344	.437	1	R
12031	3/8-24	.625	.875	.218	1.000	.500	1.937	1.250	2.437	.375	.719	.406	.500	1	R
12295														1	L
12032	1/2-20	.875	1.125	.312	1.312	.625	2.437	1.500	3.094	.500	.938	.500	.625	1	R

## Rod End Ball Joints • Female with Stud

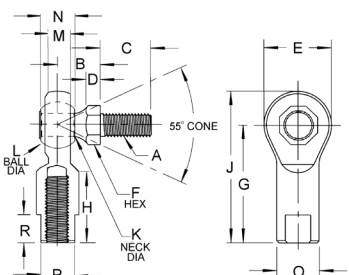
• **Bearing Raceway:**  
Locked in by annular groove-trunnion design.  
Made of fiber reinforced nylon.

• **Spherical Ball:**  
Precision made from selected low carbon steel-case hardened - file hard. Plated plus dichromate treated for corrosion resistance.

• **Outer Member (Housing):**  
Low carbon steel, plated plus dichromate treated for corrosion resistance.

• **Left Hand Thread:**  
Available with left hand thread in most sizes. Marked for easy user identification.

Only available fully assembled.



Auveco Part No.	Thread Size (A)	B	C	D	E	F	G	H	J	K	L	M	N	O	P	R	Unit Pkg.	Thread
12034	10-32	.437	.437	.156	.625	.312	1.062	.562	1.375	.189	.438	.250	.312	.406	.312	.406	1	R
12283																	1	L
12035	1/4-28	.469	.562	.156	.750	.375	1.312	.750	1.687	.250	.516	.281	.375	.469	.375	.406	1	R
12284																	1	L
12036	5/16-24	.531	.687	.187	.875	.437	1.375	.750	1.812	.312	.625	.344	.437	.500	.437	.500	1	R
12285																	1	L
12037	3/8-24	.625	.875	.218	1.000	.500	1.625	.937	2.125	.375	.719	.406	.500	.687	.562	.562	1	R
12286																	1	L
12491	7/16-20	.844	1.062	.312	1.125	.625	1.812	1.032	2.375	.437	.812	.437	.562	.750	.625	.625	1	R
12038	1/2-20	.875	1.125	.312	1.312	.625	2.125	1.187	2.781	.500	.938	.500	.625	.875	.750	.687	1	R
12288	5/8-18	1.00	1.125	.375	1.500	.750	2.500	1.500	3.250	.625	1.125	.562	.750	1.00	.875	.875	1	R
12492	3/4-16	1.187	1.812	.375	1.750	1.00	2.875	1.562	3.750	.750	1.312	.687	.875	1.125	1.00	1.00	1	R

## Damper Control Swivels

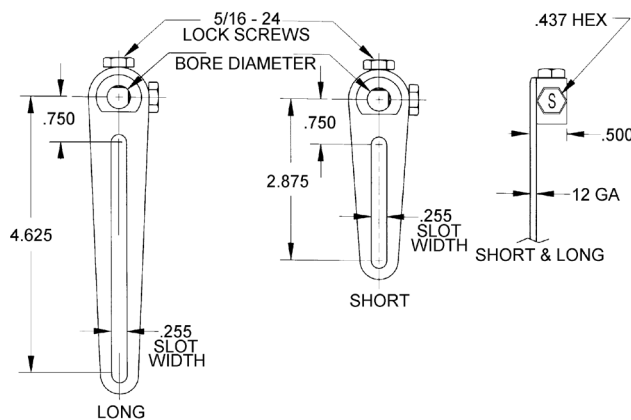
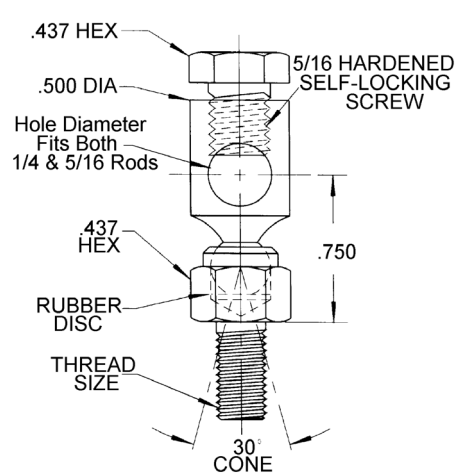
The units are made from low carbon steel and are plated and dichromate treated for corrosion resistance. The set screws are made of low carbon steel, plated and dichromate treated for corrosion resistance.

Set screws are case hardened.

A rubber disc is used in the assembly.

Only available fully assembled

Thread Size	Damper Control Swivels			
	Auveco Part No. w/o Nut & Washer	Unit Pkg.	Auveco Part No. with Nut & Washer	Unit Pkg.
1/4-28 x 9/16"	<b>12303</b>	2	<b>12047</b>	3
1/4-20 x 9/16"	<b>12305</b>	2	<b>12049</b>	3



## Crank Arms

12 Gauge Steel

**12050**

Short Series Crank Arm  
For 3/8" Shaft  
Bore Diameter: .385/.389

UNIT PACKAGE: 1

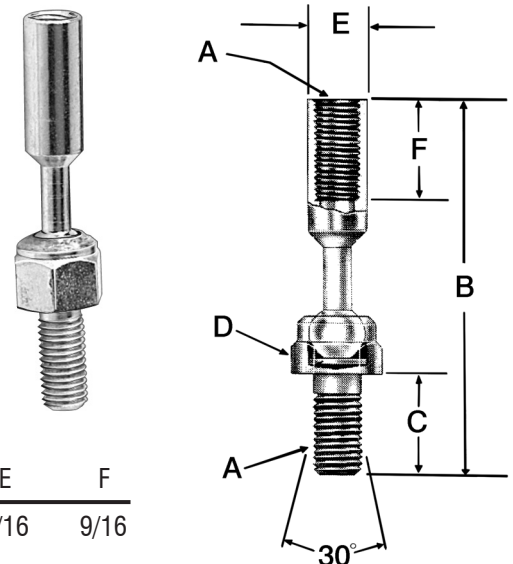


## Lightweight Ball Joint Assemblies

**Materials of construction:** Made of low carbon steel. Units are plated and dichromate treated for corrosion resistance. A rubber disc is used.

Only available fully assembled.

Auveco Part No.	Unit Pkg.	G.M.C. Part No.	A	B	C	D	E	F
<b>21533</b>	2	443773	1/4-28	2-3/32	9/16	7/16	5/16	9/16



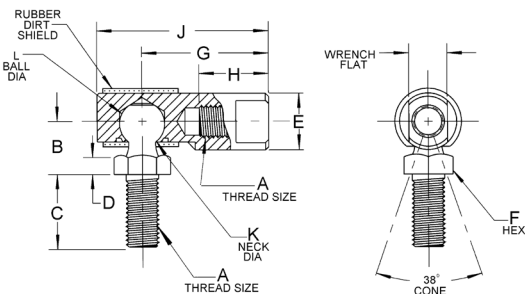
## “Flat Top” • Shurseal



### Materials of construction:

Made of low carbon steel with ball studs case hardened. Plated and dichromate treated for corrosion resistance.

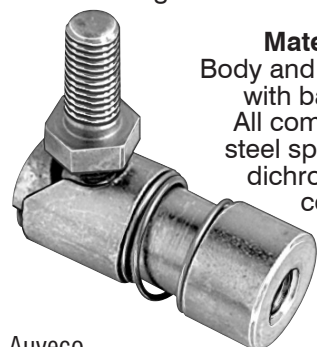
Only available fully assembled.



Auveco Part No.	A	B	C	D	E	Wrench Size	F	G	H	J	K	L	Unit Pkg.	Thread
13580	10-32	7/16	7/16	1/8	3/8	5/16	5/16	7/8	15/32	1-5/32	.177	.301	2	R
12039	1/4-28	15/32	9/16	1/8	7/16	3/8	3/8	31/32	17/32	1-5/16	.208	.347	3	R
12040	5/16-24	17/32	11/16	5/32	1/2	7/16	7/16	1-1/8	19/32	1-9/16	.250	.405	3	R
13590													2	L
12041	3/8-24	11/16	7/8	3/16	5/8	1/2	1/2	1-3/8	13/16	1-13/16	.289	.493	1	R
12042	7/16-20	7/8	1-1/8	1/4	3/4	5/8	5/8	1-15/16	1-1/8	2-1/2	.375	.618	1	R

## Quick Disconnect

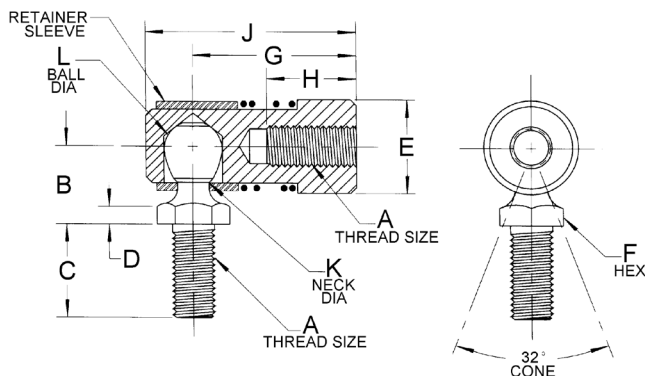
“Key Hole” design on retaining sleeve insures positive alignment of sleeve with ball cavity.



### Materials of construction:

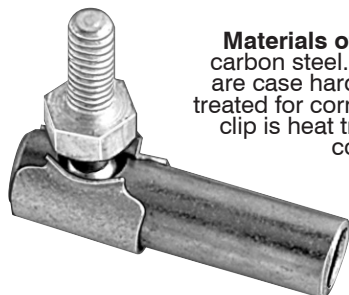
Body and ball are of low carbon steel, with ball studs case hardened. All components except stainless steel spring are plated and yellow dichromate treated for greater corrosion resistance.

Only available fully assembled.



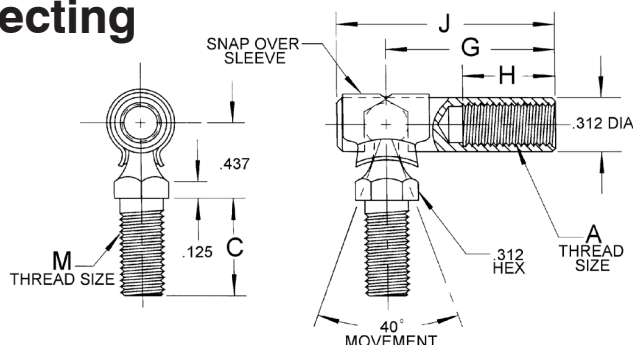
Auveco Part No.	A	B	C	D	E	F	G	H	J	K	L	Unit Pkg.
12044	1/4-28	15/32	9/16	1/8	9/16	3/8	31/32	17/32	1-1/4	.192	.347	2
12045	5/16-24	17/32	11/16	5/32	5/8	7/16	1-1/8	19/32	1-29/64	.224	.405	2
13610	3/8-24	11/16	7/8	3/16	3/4	1/2	1-3/8	13/16	1-3/4	.273	.493	1

## Disconnecting



**Materials of construction:** Made of low carbon steel. Both ball stud and ball cavity are case hardened. Plated and dichromate treated for corrosion resistance. The retaining clip is heat treated spring steel, plated for corrosion resistance.

Only available fully assembled.



Auveco Part No.	A	C	G	H	J	M	Unit Pkg.
13599	10-32NF	7/16	7/8	31/64	1-5/32	10-32NF	2
13601	10-32NF	9/16	7/8	31/64	1-5/32	1/4-28UNF	2
13600	1/4-28UNF	9/16	31/32	17/32	1-1/4	1/4-28UNF	2

## Sec. 24

830





**Single Bond  
Hose Clamps**  
Black Nylon

Auveco Part No.	Size	Clamping Range		Unit Pkg.
		Min.	Max.	
19558	1/4"	.246	.290	25
19559	5/16"	.300	.350	25
19560	11/32"	.360	.406	25
19561	13/32"	.410	.468	25
19562	15/32"	.475	.536	25
19564	19/32"	.597	.665	25
19566	3/4"	.730	.830	25
19568	61/64"	.953	1.093	25
19569	1-1/32"	1.031	1.187	25
19570	1-1/4"	1.250	1.425	10
19571	1-13/32"	1.406	1.610	10
19572	1-19/32"	1.593	1.812	10
19575	2-1/8"	2.120	2.390	10



## Spring Action Hose Clamps

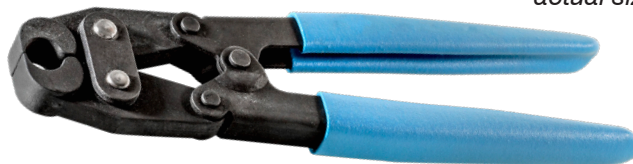
Spring Steel • Heat Treated  
Phosphate and Paint

Auveco Part No.	Hose O.D.	Color	Max. Dia. Clamp in Free Position	Width	Unit Pkg.
12682	3/8"	Black	.321	5/16"	100
12683	7/16"	Green	.405	5/16"	100
12684	1/2"	Red	.460	5/16"	100
12685	9/16"	Black	.520	5/16"	100
12686	5/8"	Olive	.583	5/16"	100
12688	11/16"	Red	.655	5/16"	100
12689	3/4"	Black	.645	3/8"	100

## Crimp Type Hose Clamp Tool

**18448**

*Photo not  
actual size*



For installing and removing  
Auveco Crimp Type Hose Clamps 18436-18447.

UNIT PACKAGE: 1

## Crimp Type Hose Clamps

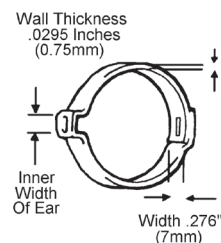
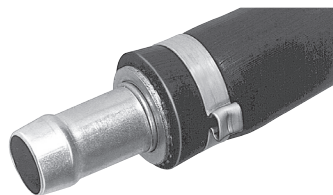
Zinc Plated

*Photos not actual size*

- For low pressure applications such as automotive, appliance, industrial machinery, etc.
- Easy to apply
- Simply slide on and clamp
- Sizes for all Hoses
- Ideal for Mass Production
- Clamps Tight
- Clamps Quickly
- Only one simple motion needed
- "Full Round" Clamping Pressure
- No gap areas to leak
- Low profile-out of the way
- Avoids Hose cutting and abrasion



Position clamp on hose



Firmly squeeze  
ear



Auveco Part No.	Nominal Size	Inches		MM		Inner Width of Ear		Unit Pkg.
		Closed-Open		Closed-Open		Inches	MM	
18436	3/8"	.350 - .414		8.9 - 10.5		.197	5	25
18437	7/16"	.381 - .444		9.7 - 11.3		.197	5	25
18438	15/32"	.394 - .486		10.4 - 12.3		.197	6	25
18439	1/2"	.453 - .524		11.4 - 13.3		.236	6	25
18440	35/64"	.472 - .551		11.9 - 14.0		.256	6.5	25
18441	9/16"	.496 - .571		12.6 - 14.5		.236	6	25
18442	5/8"	.543 - .618		13.8 - 15.7		.236	6	25
18443	11/16"	.594 - .669		15.1 - 17.0		.236	6	25
18444	23/32"	.618 - .728		15.7 - 18.5		.354	9	25
18445	3/4"	.669 - .779		17.0 - 19.8		.354	9	25
18446	7/8"	.779 - .890		19.8 - 22.6		.354	9	25
18447	1"	.898 - 1.008		22.8 - 25.6		.354	9	25



### Constant Tension Band Hose Clamps

For Heater & Radiator Hoses  
1074 Spring Steel • Black OEM Finish  
Conforms to SAE J1508 & GM 6298M  
Rated at 30 P.S.I.

Auveco Part No.	Clamping Range	Band Width	Unit Pkg.
<b>18127</b>	15.2mm - 18.5mm (5/8" - 23/32")	15mm (19/32")	10
<b>18128</b>	17.8mm - 20.0mm (23/32" - 25/32")	15mm (19/32")	10
<b>18129</b>	22.0mm - 26.0mm (7/8" - 1")	15mm (19/32")	10
<b>18132</b>	37.2mm - 44.5mm (1-15/32" - 1-3/4")	15mm (19/32")	5



### Wire Type Hose Clamps

To Install and remove wire type  
hose clamps use Auveco Tool  
20902 (See page 849)

Auveco Part No.	Hose Size O.D.	Unit Pkg.
<b>5354</b>	9/16"	50
<b>5357</b>	3/4"	50
<b>17086</b>	13/16"	50
<b>5358</b>	15/16"	50
<b>16603</b>	1-7/8"	10
<b>16604</b>	2"	10



### 9324

Mini Clamp  
Stainless Steel Band with  
Double Plated Hex Head Steel Screw  
Band Width: 5/16"  
Minimum Range 1/4" - Maximum Range 5/8"

UNIT PACKAGE: 10



### 10221

Mini Clamp  
Stainless Steel Band with Double  
Plated Slotted Head Steel Screw  
Band Width: 5/16"  
Minimum Range 1/2" - Maximum Range 7/8"

UNIT PACKAGE: 10



### Hex Slotted Screw-Worm Gear Type-Hose Clamps

Stainless Steel  
Band Saddle Screw Housing  
300 Series Stainless (Non-Corrosive)  
Screw is 400 Series (Magnetic) Stainless

Auveco. Part No.	Inside Std. Size	Clamp Range Min.-Max	Hose I.D. 3/16" Wall	Fits Plastic Pipe Size	Band Width	Unit Pkg.
<b>9584</b>	8	7/16" - 1"	5/16" to 1/2"	1/2" to 9/16"	9/16"	10
<b>9585</b>	10	1/2" - 1-1/8"	3/8" to 5/8"	1/2" to 3/4"	9/16"	10
<b>9586</b>	12	1/2" - 1-1/4"	5/8" to 3/4"	1/2" to 3/4"	9/16"	10
<b>18483</b>	16	3/4" - 1-1/2"	3/4" to 7/8"	1" to 1-1/4"	9/16"	10
<b>9587</b>	20	3/4" - 1-3/4"	1" to 1-1/4"	1" to 1-1/4"	9/16"	10
<b>9588</b>	24	1" - 2"	1-1/4" to 1-1/2"	1" to 1-1/2"	9/16"	10
<b>9589</b>	28	1-5/16" - 2-1/4"	1-1/4" to 1-3/4"	1-1/4" to 1-1/2"	9/16"	10
<b>9590</b>	32	1-9/16" - 2-1/2"	1-1/2" to 2"	1-1/2" to 2"	9/16"	10
<b>9591</b>	36	7/8" - 2-3/4"	1-3/4" to 2-1/4"	1-1/2" to 2"	9/16"	10
<b>9592</b>	40	1-1/8" - 3"	2" to 2-1/2"	2" to 2-1/2"	9/16"	10
<b>9593</b>	48	1-5/8" - 3-1/2"	2-1/4" to 3"	2-5/8" to 3"	9/16"	10
<b>9594</b>	52	1-7/8" - 3-3/4"	2-13/16" to 3-3/4"	3"	9/16"	10
<b>9595</b>	72	3-1/8" - 5"	3-3/4" to 4-1/2"		9/16"	10
<b>9596</b>	88	4-1/4" - 6"	4" to 5-1/2"	4"	9/16"	10
<b>9597</b>	96	4-3/4" - 6-1/2"	4-1/2" to 6"		9/16"	10
<b>9598</b>	104	5" - 7"	5-7/8" to 6-1/2"	6"	9/16"	10



## Hex Slotted Screw-Worm Gear Type-Hose Clamps

Partial Stainless Steel  
300 Series Stainless Steel Band and Saddle  
Plated Screw and Housing

Auveco. Part No.	Inside Std. Size	Clamp Range Min.-Max	Hose I.D. 3/16" Wall	Fits Plastic Pipe Size	Band Width	Unit Pkg.
5347	10	1/2" - 1-1/8"	3/8" to 5/8"	1/2" to 3/4"	9/16"	10
5348	12	1/2" - 1-1/4"	5/8" to 3/4"	1/2" to 3/4"	9/16"	10
18482	16	3/4"-1-1/2"	3/4" to 7/8"	1" to 1-1/4"	9/16"	10
5349	20	3/4" - 1-3/4"	1" to 1-1/4"	1" to 1-1/4"	9/16"	10
5350	28	1-5/16" - 2-1/4"	1-1/4" to 1-3/4"	1-1/4" to 1-1/2"	9/16"	10
5351	32	1-9/16" - 2-1/2"	1-1/2" to 2"	1-1/2" to 2"	9/16"	10
5352	36	7/8" - 2-3/4"	1-3/4" to 2-1/4"	1-1/2" to 2"	9/16"	10
9357	48	1-5/8" - 3-1/2"	2-1/4" to 3"	2-1/4" to 2-3/4"	9/16"	10
9599	52	1-7/8" - 3-3/4"	2-13/16" to 3-3/4"	3"	9/16"	10
9358	72	3-1/8" - 5"	3-3/4" to 4-1/2"		9/16"	10
9600	88	4-1/4" - 6"	4" to 5-1/2"	4"	9/16"	10
9601	96	4-3/4" - 6-1/2"	4-1/2" to 6"		9/16"	10

## Norma Torro® (European Style) Hose Clamps

DIN 3017 • Stainless Steel Band & Housing • Zinc Plated Steel Screw



Unique off-set non-welded design of the housing provides resistance to over-tightening damage to the hose. The short housing saddle gives a smooth underside ensuring high sealing efficiency. These clamps are original equipment on both domestic and import vehicles. They are particularly suited for fuel, vacuum, water, emission and heater hoses and can be used with silicone hoses.

Auveco Part No.	Clamping Range	Hex Size	Band Width	Unit Pkg.
16868	8mm-12mm (5/16"-1/2")	6mm*	8mm (5/16")	10
16869	10mm-16mm (3/8"-5/8")	6mm*	8mm (5/16")	10
16870	12mm-18mm (1/2"-3/4")	6mm*	8mm (5/16")	10
16871	8mm-16mm (5/16"-5/8")	6mm	9mm (11/32")	10
16872	12mm-20mm (1/2"-3/4")	6mm	9mm (11/32")	10
16873	16mm-25mm (5/8"-1")	6mm	9mm (11/32")	10
16874	20mm-32mm (3/4"-1-1/4")	6mm	9mm (11/32")	10
16875	25mm-40mm (1"-1-5/8")	6mm	9mm (11/32")	10
16876	30mm-45mm (1-3/16"-1-3/4")	6mm	9mm (11/32")	10
16877	32mm-50mm (1-1/4"-2")	6mm	9mm (11/32")	10
16878	40mm-60mm (1-5/8"-2-3/8")	6mm	9mm (11/32")	10
19252	50mm-70mm (1-31/32"-2-3/4")	6mm	9mm (11/32")	10
19253	60mm-80mm (2-3/8"-3-1/8")	6mm	9mm (11/32")	10
19254	70mm-90mm (2-3/4"-3-9/16")	6mm	9mm (11/32")	10

\*Phillips Hex Drive



Photo not actual size

## 16879

Flexible Nut Driver  
For 6mm Hex  
Fits Auveco Hose Clamps  
16868 - 16878 and 19252 - 19254

UNIT PACKAGE: 1





### Type "G" Miniature Hose Clamp

These clamps fit all standard automotive fuel injection hoses.  
Approved for all O.E.M. applications  
Zinc Plated

Auveco Part No.	Clamp Range Min.-Max	Hose I.D.	Band Width	Unit Pkg.
<b>16766</b>	8mm-9.5mm 5/16"-13/32"	5/32"	9mm (11/32")	10
<b>16767</b>	9.5mm-11.5mm 3/8"-15/32"	7/32"	9mm (11/32")	10
<b>15860</b>	10.5mm-12.5mm 7/16"-1/2"	1/4"	9mm (11/32")	10
<b>15861</b>	12.5mm-14.5mm 1/2" - 19/32"	5/16"	9mm (11/32")	10
<b>15862</b>	13.5mm-15.5mm 17/32"-5/8"	3/8"	9mm (11/32")	10
<b>21256</b>	15mm-17.5mm 19/32"-11/16"	3/8"	9mm (11/32")	10



### Natural Nylon Tubing Clamps

Auveco Part No.	Hole Dia.	Width	Tube Dia.	Unit Pkg.
<b>15525</b>	3/16"	3/8"	1/8"	50
<b>15526</b>	3/16"	3/8"	3/16"	50
<b>9246</b>	3/16"	3/8"	1/4"	25
<b>9247</b>	3/16"	3/8"	5/16"	25
<b>9248</b>	3/16"	3/8"	3/8"	25
<b>9249</b>	3/16"	3/8"	1/2"	25
<b>9250</b>	3/16"	1/2"	5/8"	25
<b>9251</b>	3/16"	1/2"	3/4"	25
<b>9252</b>	3/16"	1/2"	1"	25



### Steel Clamps with Neoprene Jacket Zinc Plated

UNIT PACKAGE: 10

Auveco Part No.	Tube Size	Band Width	Mounting Hole Diameter
<b>20502</b>	1/4"	1/2"	17/64"
<b>20503</b>	3/8"	1/2"	17/64"
<b>20504</b>	1/2"	1/2"	17/64"
<b>20505</b>	5/8"	1/2"	17/64"
<b>20506</b>	3/4"	1/2"	17/64"
<b>20507</b>	7/8"	1/2"	17/64"
<b>20508</b>	1"	1/2"	17/64"
<b>20509</b>	1-1/4"	1/2"	17/64"
<b>20510</b>	1-1/2"	1/2"	17/64"
<b>20511</b>	1-3/4"	1/2"	17/64"
<b>20512</b>	2"	1/2"	17/64"



### Aluminum Tubing Clamps With Neoprene Jacket

Auveco Part No.	Hole Dia.	Width	Tube Dia.	Unit Pkg.
<b>17361</b>	1/4"	1/2"	1/4"	15
<b>17362</b>	1/4"	1/2"	5/16"	15
<b>17363</b>	1/4"	1/2"	3/8"	15
<b>17364</b>	1/4"	1/2"	1/2"	15
<b>17365</b>	1/4"	1/2"	5/8"	15
<b>17366</b>	1/4"	1/2"	3/4"	15
<b>17367</b>	1/4"	1/2"	7/8"	15
<b>17368</b>	1/4"	1/2"	1"	15
<b>22170</b>	1/4"	1/2"	1-1/4"	10
<b>22171</b>	1/4"	1/2"	1-1/2"	10
<b>22172</b>	1/4"	1/2"	2"	10



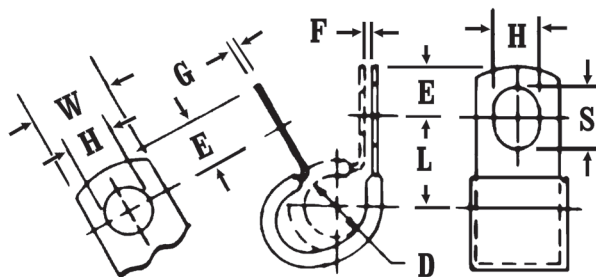
### Insulated "Half" Clamps Galvanized Coated with Black Vinyl (1/32" Thick)

Auveco Part No.	Inside Diameter	Hole Diameter	Center to Center	Hole Center to End	Top of Radius to Base	Gauge	Width	Unit Pkg.
<b>10608</b>	3/16"	7/32"	7/16"	1/4"	5/32"	.032	1/2"	25
<b>10609</b>	1/4"	7/32"	1/2"	1/4"	7/32"	.048	1/2"	25
<b>10610</b>	5/16"	9/32"	17/32"	5/16"	9/32"	.048	5/8"	25
<b>10611</b>	3/8"	9/32"	9/16"	5/16"	11/32"	.048	5/8"	25
<b>10612</b>	7/16"	9/32"	5/8"	5/16"	13/32"	.060	5/8"	25
<b>10613</b>	1/2"	9/32"	11/16"	5/16"	15/32"	.060	5/8"	25
<b>10614</b>	5/8"	9/32"	13/16"	5/16"	9/16"	.060	5/8"	25
<b>10615</b>	3/4"	9/32"	7/8"	5/16"	11/16"	.060	5/8"	25

**Steel Insulated Closed Clamps**

Furnished Open • Galvanized • Coated with Black Vinyl (1/32" Thick)

UNIT PACKAGE: 25



Auveco Part No.	D Inside Diameter	H Hole Diameter	L Center to Center	W Width	E Hole Center to End	F Gap	G Gauge	S Slot Length
<b>Small Hole Clamps</b>								
17087	3/16"	9/32"	1/2"	1/2"	5/16"	1/32"	.032"	3/8"
9381	1/4"	9/32"	17/32"	1/2"	5/16"	1/32"	.032"	3/8"
9382	5/16"	9/32"	9/16"	1/2"	5/16"	1/32"	.032"	3/8"
9383	3/8"	9/32"	19/32"	1/2"	5/16"	1/16"	.032"	3/8"
9384	1/2"	9/32"	21/32"	1/2"	5/16"	1/16"	.048"	3/8"
9385	5/8"	9/32"	23/32"	1/2"	5/16"	1/16"	.048"	3/8"
9386	3/4"	9/32"	25/32"	1/2"	5/16"	1/16"	.048"	3/8"
9387	7/8"	9/32"	27/32"	1/2"	5/16"	1/16"	.048"	3/8"
9388	1"	9/32"	29/32"	1/2"	5/16"	1/16"	.048"	3/8"

**Large Hole Clamps**

10598	1/4"	13/32"	21/32"	3/4"	7/16"	1/32"	.032"	1/2"
10599	5/16"	13/32"	11/16"	3/4"	7/16"	1/32"	.032"	1/2"
10600	3/8"	13/32"	23/32"	3/4"	7/16"	1/16"	.032"	1/2"
10601	1/2"	13/32"	25/32"	3/4"	7/16"	1/16"	.048"	1/2"
10602	5/8"	13/32"	27/32"	3/4"	7/16"	1/16"	.048"	1/2"
10603	3/4"	13/32"	29/32"	3/4"	7/16"	1/16"	.048"	1/2"
10604	7/8"	13/32"	31/32"	3/4"	7/16"	1/16"	.048"	1/2"
10605	1"	13/32"	1-1/32"	3/4"	7/16"	1/16"	.048"	1/2"
10606	1-1/4"	13/32"	1-5/32"	3/4"	7/16"	1/16"	.048"	1/2"
10607	1-1/2"	13/32"	1-9/32"	3/4"	7/16"	1/16"	.048"	1/2"
17588*	1-3/4"	13/32"	1-13/32"	3/4"	7/16"	1/16"	.048"	1/2"
17589*	2"	13/32"	1-9/16"	3/4"	7/16"	1/16"	.048"	1/2"

\*Unit Package: 10


**Steel Uninsulated Closed Clamps Furnished Open**

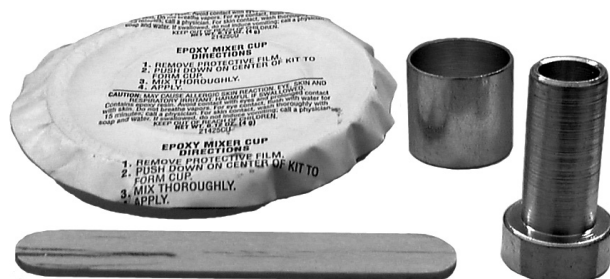
Galvanized

UNIT PACKAGE: 25

Auveco Part No.	D Inside Diameter	H Hole Diameter	L Center to Center	W Width	E Hole Center to End	F Gap	G Gauge	S Slot Length
9389	1/4"	9/32"	1/2"	1/2"	5/16"	1/32"	.032"	3/8"
9391	3/8"	9/32"	9/16"	1/2"	5/16"	1/32"	.032"	3/8"

*Photos not actual size*

## Stop excessive coolant consumption or leakage!



**20574**  
Engine Manifold  
Repair Kit

UNIT PACKAGE: 1 Kit

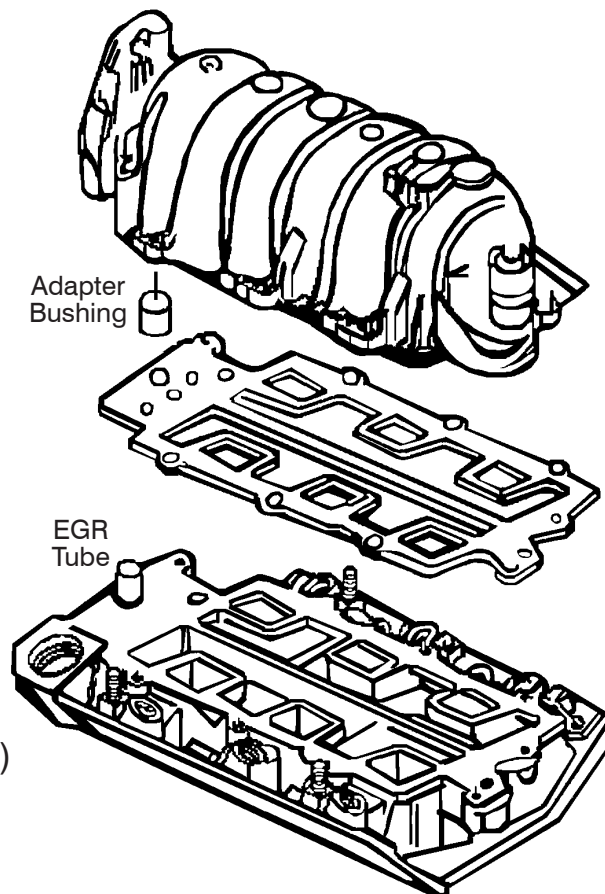
2003 - 1995 GM vehicles with 3.8 L series 2 engines (VIN K - RPO L36) have been experiencing excessive coolant consumption or coolant leakage near or under the throttle body and intake manifold. This is caused when the EGR tube on the lower manifold degrades the composite material of the upper intake plenum around the passage area between the two part manifold. Once the composite material is degraded, it becomes porous and allows the coolant areas on either side of the EGR passage to leak coolant either internally or externally. If it leaks internally into the intake manifold and then the cylinders, it can result in "hydro-lock" of the engine. A simple coolant leak has resulted in a major problem that as best requires changing the spark plugs and oil in order to start the engine. That doesn't correct the cause of the problem though.

Until now, the solution has been to replace the upper plenum and lower manifold at a retail cost of \$1200 - \$1400 for parts and labor. That alone does not correct the root cause of the problem. Our 20574 repair kit offers an inexpensive but highly effective and permanent solution.

Here are the steps involved:

1. Remove the upper intake manifold.
2. Remove the EGR tube from the bottom plenum.
3. Install our new EGR port tube.
4. Use epoxy supplied with our repair kit to install our new adapter bushing in the upper plenum.
5. Reinstall the upper intake manifold.

(Detailed instructions are included with the kit)



As an added benefit, the smaller diameter of our EGR port tube creates an air space between the repaired (with adapter bushing) upper plenum and the new EGR port tube. This air space insulates the composite material of the plenum from further damage.

*Photos not actual size*

## Automotive Body Sealer Natural Color

### 1001

10.5 fluid ounces per Cartridge  
(Green Colored Cartridge)

UNIT PACKAGE: 10 Cartridges

For use as a water and dust seal on exterior and interior body surfaces. New improved formula allows for a longer open time so it can be tooled for several minutes after being applied. Cures to a firm abrasion resistant seal with no cracks or peeling. Can be air dried or force dried and then painted within 30 minutes

Stands up on vertical surfaces and won't crack even in large seams.

Ideal for drip molds, interior trunk welds, exterior body seam welds and many other body seam areas.

Possesses excellent flexibility properties so it will not harden or become brittle.

Excess sealer and smears can be cleaned up with a suitable solvent before sealer dries. Sealer surface accepts all paints and must be painted.

Shelf life is 6 months.

## Seam-n-Joint Sealer Natural Color

### 1002

11 fluid ounces per Cartridge  
(Silver Colored Cartridge)

UNIT PACKAGE: 10 Cartridges

Premium quality, fast setting seam-n-joint sealer with superior adhesion for interior and exterior automotive applications (except windshields)

Its self-leveling qualities make it an excellent sealer on quarter panel seams, trunk seams, wheel house seams, floor seams, cowl seams and door skins.

1002 smooths easily so rough edges and fingerprints disappear.

Possesses superior flexibility properties, eliminating any cracking or peeling. Skin time is 1-2 minutes.

Can be painted with any type of paint in 30-60 minutes. Shelf life is 6 months.

**Distributors: Auveco 1001 and 1002 can be combined for price breaks and prepaid freight.**

# EPOXY REPAIR KITS

## Auveco-Flex Epoxy Repair Kit

### 1005



A two part high strength epoxy adhesive, filler and surface designed for bonding or repairing urethane bumpers, TPO Bumpers, filler panels and most other flexible plastic parts.

Working Time: Approximately 5 minutes

Sandable: 15 to 30 minutes

Paintable: 15 minutes

Cures: 6 to 8 hours

Shelf life: 12 months

Unit Package contains: Part 1 Resin (Black) & Part 2 Hardener (White)

UNIT PACKAGE: 2 Tubes (10 fl. oz kit)

## Auveco-Rigid - Set Epoxy Repair Kit

### 1006



A two part high strength epoxy adhesive, filler and surface designed for bonding or repairing SMC, rigid plastics, fiberglass, steel, aluminum, glass and other rigid type materials.

Working Time: 5 minutes approximately

Sandable: 15 to 30 minutes

Paintable: 15 minutes

Cures: 6 to 8 hours

Shelf life: 12 months

Unit Package contains: Part 1 Resin (Blue) & Part 2 Hardener (Light Gray)

UNIT PACKAGE: 2 Tubes (10 fl. oz kit)



## Hardens like Steel in 20 Minutes

FixitQuik will plug or seal practically anything that leaks, it will patch holes and cracks. Excellent for rebuilding or fabricating parts and an all purpose adhesive for metals, wood, glass, masonry, ceramics and many plastics. It can also be drilled, tapped, filed, sanded and painted like metal. Sets steel hard in 20 minutes.



**1007**  
1 Tube (4 oz.)

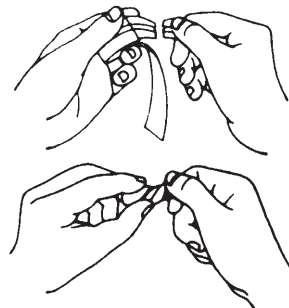
**1008**  
1 Case (24 - 4oz. Tubes)

## Hints for Use

- FixitQuik adheres to most surfaces. Best results will be achieved if area is first roughened by sanding or filing to clean and prepare surface.
- Starts to harden 2 minutes after mixing. Repair should be in place before hardening starts.
- A smooth finish can be obtained by rubbing with wet finger or damp cloth before hardening begins.
- Can be drilled, filed, tapped sanded and machined after one hour of curing (hardening).
- Can be painted immediately, even before full hardening.
- Usable under water. Mix as usual and use the polyethylene wrapper, so material will not stick to hands as the FixitQuik is being forced onto the wet surface.
- Not recommended for use on polyethylene and polypropylene.
- Wash hands thoroughly with soap and water after using.

## Mixing Directions

1. Break off required portion of material.
2. Twist and knead until uniform color is achieved leaving no streaks.
3. Apply at once to surface. (2 minute work life).
4. Remove excess before it hardens.



## Infinite Uses

*U.S.D.A. Authorized*



**Plumbing Repairs:** Sink traps, oil and water tanks, pipe joints, drain leaks, etc.



**Electrical:** Use in place of tape, ceramic connectors, knobs, etc.



**Ceramic Repair:** Cracked porcelain wall tile, floor tile, etc.



**Auto Repair:** Metal Strips, small dent repairing, fuel tank, radiators, etc.



**Underwater Repair:** Concrete swimming pools, fish tanks, etc.



**Custom Formed Gaskets:** For permanent sealing and bonding.



**Home Repairs:** Dethreaded screws in wood or metal, picture hanging, light fixture installation, fixing loose rungs and legs on furniture, air duct leaks, etc.

Safe for lines carrying potable water.

### Physical Properties

Density .....	15.8 lb./gal. (1.9gm/cm <sup>3</sup> )
Compression Strength .....	18,000 psi
Tensile Strength .....	6,000 psi
Modulus of Elasticity .....	600,000 psi
Shear Strength .....	700 psi
Izod Impact .....	0.3 ft.-lb/in. of notch
Hardness (Shore D) .....	85
Maximum Use Temperature .....	300°F (149°C)

### Electrical Properties

Volume Resistivity .....	5 x 10 <sup>15</sup> ohm-cm
Dielectric Strength .....	400 volts/mil @ 0.125 in.

**WARNING:** Harmful if swallowed, Eye irritant. Contains epoxy and amine resins. Keep away from children. If swallowed, call physician. For eyes, flush with water and call physician.

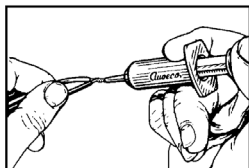


*Photos not actual size*

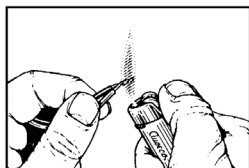
## Solder Paste

*Works with the head of a match, lighter, soldering iron or torch.*

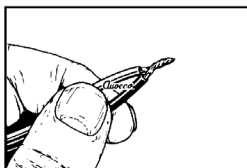
Five times stronger than ordinary solder. Provides strength without the distortion of high temperature brazing.



1. Apply solder paste



2. Apply heat until paste begins to bubble



3. Solder will solidify



### 20409

Silver Bearing Solder Paste

For Ferrous and Non-Ferrous Metals: steel, cast iron, stainless steel, brass, bronze, nickel, platinum, chrome, monel, galvanized, gold & silver. Auto electrical systems, circuit boards, etc. Flows freely at 430° F.

Tensile Strength: 10,000 to 25,000 PSI.

7.1 grams syringe

UNIT PACKAGE: 1

### 20410

Copper Bearing Lead-Free Solder Paste

For use with copper. Also works on brass, stainless steel, nickel and bronze. Does not contain any lead, cadmium or antimony. Flows freely at 430° F.

Tensile strength: 10,000 to 25,000 PSI.

14.7 grams syringe

UNIT PACKAGE: 1

## Weld Pins

Round Head • Copper Plated Steel

By welding these pins to a damaged body panel, a body shop technician can use a gripping tool to pull the dent out of the panel.



Pin Diameter: 2mm (.080")

Length: 2"

Head Diameter: .145"

**19095:** UNIT PACKAGE: 100

**19096:** UNIT PACKAGE: 250

**19097:** UNIT PACKAGE: 500

Pin Diameter: 2.5mm (.098")

Length: 2"

Head Diameter: .175"

**19098:** UNIT PACKAGE: 100

**19099:** UNIT PACKAGE: 250

**19100:** UNIT PACKAGE: 500

## Weather-Seal Wrap



Clear, plastic film that has an adhesive on one side that is strong enough to hold the wrap in place on almost any surface and seal out contaminants. Can be easily removed without pulling off paint, leaving adhesive residue or damaging the surface.

It can seal out rain, snow, wind and dirt when windshields or door glass has been broken.

Weather-Seal Wrap can be used to protect vehicle carpet and upholstery from soiling and spills. Apply it to paint booth walls and prevent over spray from discoloring white walls. Wrap has 3 mils of plastic protection to preserve finishes, it can also be used as a temporary, protective coating against light abrasions.

### 21077

24" wide x 200 ft. long

UNIT PACKAGE: 1 Roll

### 21078

36" wide x 200 ft. long

UNIT PACKAGE: 1 Roll

## Moulding Tape

For mounting exterior trim, side mouldings, emblems & nameplates



- Acrylic foam tape with an aggressive, high performance adhesive on both sides.
- Works on all types of plastic mouldings & emblems
- Will not crack or dry out
- Will not absorb water
- Will not migrate in hot weather

### 21074

.045" thick x 3/16" wide x 60 ft.

UNIT PACKAGE: 1 Roll

### 21075

.045" thick x 1/2" wide x 60 ft.

UNIT PACKAGE: 1 Roll

### 21076

.045" thick x 7/8" wide x 60 ft.

UNIT PACKAGE: 1 Roll

*Photos not actual size*

## 20791

Plastic and Headlight Resurfacer/Protector



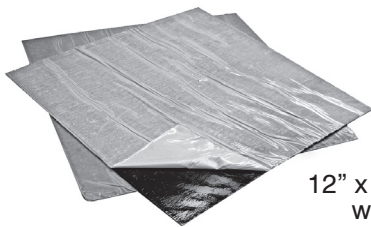
Yellowed or cloudy headlights impair night vision.

Use of this product on yellowed or discolored headlights will significantly increase the clarity of the lens giving the driver the ability to see better at night.

3 easy steps and about 15 minutes is all it takes to restore most headlights to a like-new appearance that lasts. In addition, it may be used safely on most types of plastics, windshields and more.

Kit Includes: Complete instructions, Pretreatment, Water Base Pretreatment, Oxidation Remover, Shine Restorer/Protector (Increases shine, seals & protects), gloves, sanding sheets, and lint free paper towels.

UNIT PACKAGE: 1 Kit



## 16506

Trunk Vibration/Sound Dampening Pads

12" x 12" x .060" thick pads with adhesive backs.

Can be cut to shape and painted for easy installation. The clear vinyl sheet on the black side must be removed before painting. Meets GM specification #2747M.

UNIT PACKAGE: 6

## Stronghold Gloves

Micro-Knit with Nitrile Palms

- Superior Dexterity & Durability
- Excellent Gripping Power
- "Breathable" Micro-Knit
- Super Lightweight
- Machine Washable
- Seamless Comfort



## 20694

Size: Large

UNIT PACKAGE: 1 Pair

## 20695

Size: Extra Large

UNIT PACKAGE: 1 Pair

## Grease Bully Chemical Resistant Black Nitrile Disposable Gloves

- 6 mil thick, 9" long
- 50% Stronger than standard disposable nitrile gloves
- Highly resistant to puncture and protects hands from solvents, grease & oils
- Reduced Perspiration
- Textured for superior grip
- Powder & Latex free



## 22190

Size: Medium

UNIT PACKAGE: 100 Gloves (50 pairs)

## 22191

Size: Large

UNIT PACKAGE: 100 Gloves (50 pairs)

## 22192

Size: Extra Large

UNIT PACKAGE: 100 Gloves (50 pairs)

## Tiger Grip Chemical Resistant Hi-Vis Orange Nitrile Disposable Gloves

- Unique raised texture for superior grip
- 7 mil thick, 9" long
- Hi-Vis Orange color
- Highly resistant to puncture and protects hands from solvents, grease & oils
- Powder & Latex free



## 22186

Size: Medium

UNIT PACKAGE: 100 Gloves (50 pairs)

## 22187

Size: Large

UNIT PACKAGE: 100 Gloves (50 pairs)

## 22188

Size: Extra Large

UNIT PACKAGE: 90 Gloves (45 pairs)

## 22189

Size: Extra Extra Large

UNIT PACKAGE: 90 Gloves (45 pairs)

**Panther Grip Chemical Resistant Hi-Vis Green Nitrile Disposable Gloves**

- Unique raised texture for superior grip
- 6 mil thick, 9" long
- Hi-Vis Green color
- Highly resistant to puncture and protects hands from solvent, grease & oils
- Powder & Latex free

**22193**

Size: Medium

 UNIT PACKAGE:  
100 Gloves (50 pairs)

**22194**

Size: Large

UNIT PACKAGE: 100 Gloves (50 pairs)

**22195**

Size: Extra Large

UNIT PACKAGE: 90 Gloves (45 pairs)

**Blue Nitrile Gloves**

- Chemical Resistant
- 4 MIL Non-Latex
- Secure Grip - Wet or Dry
- Puncture Resistant
- Powder Free
- Fits right or left hand
- Hypoallergenic



Nitrile is resistant to chemicals commonly found in auto, auto body and glass shops including solvents, parts cleaners, paint thinners, lacquers, urethane, enamel, epoxy resins and sealants

**20689**

Size: Medium

UNIT PACKAGE: 100 Gloves (50 pairs)

**20690**

Size: Large

UNIT PACKAGE: 100 Gloves (50 pairs)

**20691**

Size: Extra Large

UNIT PACKAGE: 100 Gloves (50 pairs)

**Rough Service**

Long Life Light Bulbs



The Rough Service bulb features a special filament that withstands shock and vibration. It was designed exclusively for the automotive service industry. The brass base eliminates "freezing" or corroding in the socket; however, it will explode if it comes in contact with a liquid.

**16571**

75 Watt

UNIT PACKAGE: 120 (1 Case of 20 Six-Paks)

**Super Toughcoat**

Long Life Light Bulbs



Super Toughcoat's amazing silicon coating makes it the safest, sturdiest light bulb ever developed. Patented coating protects personnel and products from shattered glass caused by impact, dropping, unusual stress, contact with liquids and thermal shock. Brass base eliminates "freezing" or corroding in the socket.

**16575**

100 Watt

UNIT PACKAGE: 6

**Acid Brushes**

Tin Handle Horse Hair Bristles



Auveco Part No.	Width	Trim	Length	Unit Pkg.
<b>15793</b>	1/4"	3/4"	6"	1 Gross
<b>15794</b>	3/8"	3/4"	6"	1 Gross
<b>15795</b>	1/2"	13/16"	6"	1 Gross
<b>15796</b>	9/16"	7/8"	6"	1 Gross
<b>15798</b>	3/4"	1"	6-3/8"	1 Gross

**Chip Brushes**


Wood Handle Natural Bristles

Auveco Part No.	Width	Trim	Unit Pkg.
<b>15800</b>	1-1/2"	1-5/8" x 5/16"	5
<b>15801</b>	2"	1-1/2" x 5/16"	4



# MISCELLANEOUS ITEMS

*Photos not actual size*

**Sec. 27**

## Chip & Dope Brush

Wood Handle Horse Hair Bristles



Auveco Part No.	Width	Trim	Length	Unit Pkg.
15799	11/16"	1-1/8"	7"	25

## Steel Wire Scratch Brushes

Wood Handle



**15803**

Size of Block: 14" x 1"

Rows: 3 x 19

Trim: 1-3/16"

Wire Gauge: 33 Gauge Steel

UNIT PACKAGE: 1

**15805**



Size of Block: 10" x 1-1/8"

Rows: 4 x 16

Trim: 1-3/16"

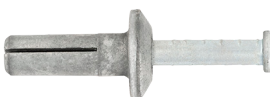
Wire Gauge: 33 Gauge Steel

UNIT PACKAGE: 1



## Toggle Bolts Spring Wing Type

Auveco Part No.	Head Style	Screw Dia.	Thread Size	Use Drill	Unit Pkg.
10011	Mushroom	1/8"	6-32 x 3"	3/8"	10
10012	Mushroom	1/8"	6-32 x 4"	3/8"	10
10013	Round Slotted	3/16"	10-24 x 3"	9/16"	10
10014	Round Slotted	3/16"	10-24 x 4"	9/16"	10
10018	Round Slotted	1/4"	1/4-20 x 4"	3/4"	10



## Hammer Drive Anchors

Steel

Auveco Part No.	Size	Hole Size	Unit Pkg.
12858	1/4" x 3/4"	1/4"	25
12859	1/4" x 1"	1/4"	25
12860	1/4" x 1-1/4"	1/4"	10
12861	1/4" x 1-1/2"	1/4"	10



## Nylon Anchor

Steel Nail

Auveco Part No.	Size	Head Style	Unit Pkg.
12870	1/4" x 1"	Mushroom	25



## Hollow Wall

Anchor  
Drive Type

Auveco Part No.	Size	Wall Thickness	Drill Size	Unit Pkg.
12890	1/8" Long	5/8" to 7/8"	1/4"	10



## Plastic Anchors

Auveco Part No.	Screw Size	Drill Size	Unit Pkg.
10005	#4 - #6	3/16"	50
12851	#8 - #10	3/16"	50
10006	#10 - #12	1/4"	50
12852	1/4" - 5/16"	5/16"	50



## Lag Screw Shields

Auveco Part No.	Screw Size	Length	Drill Size	Unit Pkg.
9994	3/8"	Long	5/8"	10



## Hollow Wall Anchors

Auveco Part No.	Size	Wall or Surface Thickness	Unit Pkg.
10008	1/8" Long	5/8" to 1-1/4"	10
10009	3/16" Short	1/8" to 5/8"	10
10010	3/16" Long	5/8" to 1-1/4"	10
12832	1/4" Long	5/8" to 1-1/4"	10

## Hollow Wall Toggle with Screws



Auveco Part No.	Toggle Size	Screw Length	Hole Size	Unit Pkg.
12833	1/8"	2"	3/8"	10

*Photos not actual size*
**Screw Pin Anchor Shackles**

Weldless Drop-Forged Galvanized Stud with Alloy Pin


**12184**

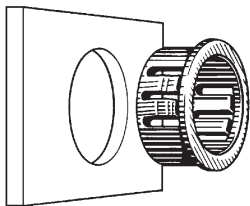
 Size: 5/16"  
 Length Inside: 1-1/4"  
 Dimensions Between Eyes: 9/16"  
 Diameter Pin: 3/8"  
 Safe Working Load (Tons): 3/4"

UNIT PACKAGE: 1


**Nylon  
Spacer Bushings  
Stand-Offs**

Tough and resilient white nylon spacer bushings are ideal for use in electrical and electronic applications or anywhere a slip surface is needed. They can be used as bushings, bearings, rollers, glides or separators.

Auveco Part No.	I.D.	O.D.	Length	Unit Pkg.
<b>16198</b>	.257"	1/2"	1/4"	100
<b>16200</b>	.257"	1/2"	3/8"	100
<b>16202</b>	.257"	1/2"	1/2"	100
<b>16204</b>	.257"	1/2"	5/8"	100
<b>16205</b>	.257"	1/2"	3/4"	100
<b>16207</b>	.257"	1/2"	1"	100


**Standard Insulating Bushings**

Nylon bushings designed to protect wires, cables, tubing, etc. from sharp, unfinished panel edges. Each size bushing employs multiple lock features to positively snap into panels ranging from 1/32" to 1/8" thickness. Available in both black and white nylon.



Auveco Part No.		Dimensions			Panel Hole Dia.
Black Nylon	White Nylon	Inside Dia.	Head Dia.	Thick-ness	
Unit Package: 50					
<b>16087</b>		1/4"	15/32"	13/32"	3/8"
<b>16088</b>		3/8"	37/64"	13/32"	1/2"
<b>16089</b>		7/16"	21/32"	13/32"	9/16"
<b>16090</b>		1/2"	23/32"	13/32"	5/8"
<b>16091</b>		5/8"	27/32"	13/32"	3/4"
<b>16092</b>		11/16"	61/64"	29/64"	7/8"
<b>16093</b>		3/4"	1-1/8"	29/64"	1"
<b>16094</b>		15/16"	1-7/32"	29/64"	1-3/32"
<b>16095</b>		15/16"	1-23/64"	29/64"	1-1/4"
Unit Package: 25					
<b>16096</b>	<b>16108</b>	1-5/16"	1-39/64"	29/64"	1-1/2"
<b>16097</b>		1-5/8"	2-1/8"	29/64"	2"


**ALL-FIT  
Adjustable Bushings**

Black nylon ALL-FIT Adjustable Bushings are designed to protect wire, cable, tubing or irregular shaped items from sharp, unfinished edges. The specially designed resilient multiple supports absorb shock and vibration, and adjust to accept various diameters and shapes. The Bushing is equipped with multiple locks to snap in panel thicknesses ranging from 1/32" to 1/8"

Auveco Part No.	Panel Hole Dia.	Bushing Dimensions			Unit Pkg.
		Head Dia.	Thick-ness	Max. I.D.	
<b>16564</b>	5/8"	23/32"	13/32"	7/16"	50
<b>16565</b>	3/4"	55/64"	25/64"	1/2"	50
<b>16567</b>	7/8"	15/16"	29/64"	9/16"	50
<b>16568</b>	1"	1-1/16"	29/64"	3/4"	50

**ORDER BY FAX**

Auveco has custom fax order forms available.

This order form ensures that your fax includes all the necessary information needed for Auveco to quickly process your order.

You can request fax order forms by calling customer service at 1-800-354-9816

**ORDER ONLINE**

Auveco's website has been completely renovated. Our new design is user friendly and allows quick and easy ordering.

Product is searchable by car make, OEM number and category, as well as, several attribute drop downs within individual categories. All product also has available inventory listed.

Make sure to head over to

**www.auveco.com**

to receive up to date information on all our products.



# MISCELLANEOUS ITEMS

*Photos not actual size*

**Sec. 27**



## Clear Flexible Vinyl (PVC) Tubing

Our tubing has a broad range of chemical resistance to acids, alkalies and solvents. It's ideal for use in industrial air pressure line applications, in the food industry (FDA approved), for potable water, and for various gases and chemicals.

Auveco Part No.	I.D.	O.D.	Wall Thickness	*Max. Suggested Pressure PSI @ 70° F
<b>14801</b>	1/8"	1/4"	1/16"	59
<b>14802</b>	3/16"	5/16"	1/16"	51
<b>14803</b>	1/4"	3/8"	1/16"	51
<b>14804</b>	5/16"	7/16"	1/16"	48.
<b>14805</b>	3/8"	1/2"	1/16"	41
<b>14807</b>	1/2"	5/8"	1/16"	28
<b>14808</b>	1/2"	3/4"	1/8"	41

Each 100ft UNIT PACKAGE

*\*We recommend verification by testing of the size and material to be used.*

## Pushnut Fasteners

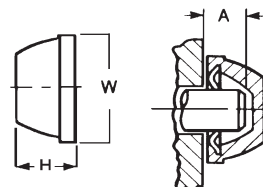
Axle Caps

- Cover Color - Black
- Cover Material - Plastic
- Caps self-align on shafts
- Low push-on force, high retention
- Fast installation



**14178**

Shaft Diameter: 3/16"  
Cap O.D., W: .656  
Overall Height, H: .344  
Min. Shaft Extension, A: .150  
Steel Thickness: .012  
Min. Push-on Force: 35  
Min. Holding Strength: 220



Tooth Design

UNIT PACKAGE: 50



## "Nipper" Wire Rope Clip

Galvanized Malleable Iron Base  
Zinc Plated Stud U-bolt

Auveco Part No.	Use with Rope Diameter	Diameter	U-Bolt Dimensions Length Overall	Center to Center	Unit Pkg.
<b>12171</b>	1/8"	3/16"	1"	1/2"	6
<b>12172</b>	3/16"	1/4"	1-1/16"	9/16"	6
<b>12173</b>	1/4"	5/16"	1-1/2"	11/16"	6
<b>12177</b>	1/2"	7/16"	2-3/8"	1"	4



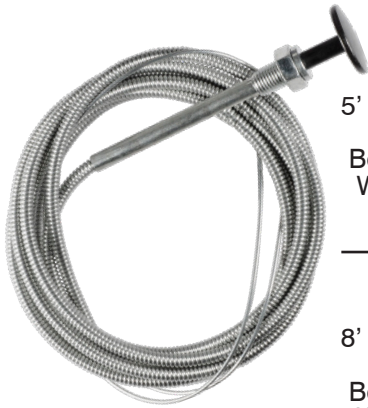
## Washer Cap Type Pushnut Fasteners

Zinc Finish



Auveco Part No.	Steel Thickness	Height H	Cap Diameter	Washer Diameter D	Stud Diameter	Performance Pounds		Unit Pkg.
						Push-On Force	Min. Holding Strength	
<b>14170</b>	.018	.205	.289	1/2	1/4(.250)	65	280	100
<b>14171</b>	.020	.236	.358	5/8	5/16(.312)	90	460	100
<b>*8719</b>	.020	.234	.419	11/16	3/8(.375)	70	380	100
<b>14172</b>	.025	.270	.431	3/4	3/8(.375)	90	700	100
<b>14173</b>	.030	.328	.504	7/8	7/16(.438)	150	960	100
<b>8665</b>	.030	.328	.567	15/16	1/2(.500)	150	800	100
<b>14174</b>	.031	.413	.693	1-3/16	5/8(.625)	230	1500	50

\*Nickel Plated

**Push-Pull Controls**

**14541**

5' Long Choke Control  
Black Knob  
Body Thread: 3/8"-24  
Wire Diameter: .047"

UNIT PACKAGE: 1

**20243**

8' Long Choke Control  
Black Knob  
Body Thread: 3/8"-24  
Wire Diameter: .054"

UNIT PACKAGE: 1

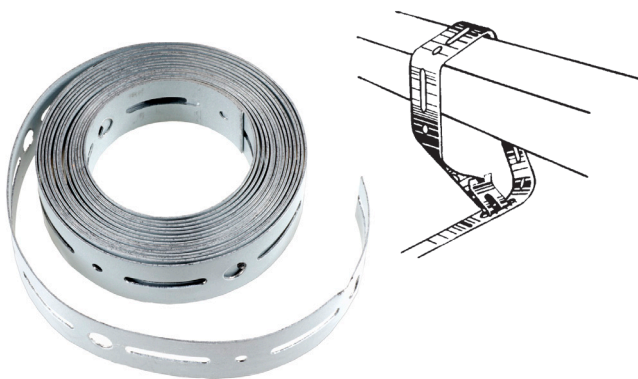

**Mechanics Wire**

Soft Annealed  
Black Steel Wire

Auveco Part No.	Wire Gauge	Wire Length	Unit Pkg.
<b>14205</b>	18	2 LB. (332')	1 Spool
<b>14206</b>	16	2 LB. (192')	1 Spool
<b>14207</b>	18	5 LB. (831')	1 Spool
<b>14208</b>	16	5 LB. (480')	1 Spool

**Perforated Hanger Strap**

Hot Rolled Galvanized Steel


**14926**

Gauge: 28  
3/4" Wide x 10 Ft.

UNIT PACKAGE: 1 ROLL

**14927**

Gauge: 24  
3/4" Wide x 10 Ft.

UNIT PACKAGE: 1 ROLL

**Gas Pump Nozzles**

Rebuild-able


**16294**

For Unleaded  
(No Lead) Gas  
Blue Scuff Guard  
Female Thread: 1"

UNIT PACKAGE: 1


**16296**

"Throwaway Nozzle"  
For Unleaded  
(No Lead) Gas  
Blue Scuff Guard  
Female Thread: 3/4"

UNIT PACKAGE: 1

**Gas Pump Swivel**

C.A.R.B. Approved

Minimum Pressure Drop: Less Than 1PSI @ 10GPM

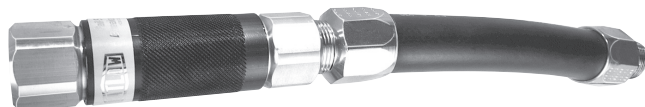

**16299**

3/4" Male x 3/4" Female

UNIT PACKAGE: 1

**Gas Pump Fail-Safe  
Breakaway Hose Coupling**

C.A.R.B. Approved • 360 Degree Swivel  
1.5 Pound Pressure Drop @ 10GPM


**16303**

Diameter: 3/4"

UNIT PACKAGE: 1

# MISCELLANEOUS ITEMS

*Photos not actual size*

**Sec. 27**



## Expansion Plugs Zinc Plated



Auveco Part No.	Size	Type	Unit Pkg.
3937	1/2"	Concave	100
3938	5/8"	Concave	100
3939	3/4"	Concave	100
3941	15/16"	Concave	100
3942	1"	Concave	100
3944	1-1/8"	Concave	100
3945	1-3/16"	Concave	100
3946	1-1/4"	Concave	100
3949	1-5/8"	Concave	50
3950	1-3/4"	Concave	50
3952	7/16" O.S.	Cup	25
3953	1/2"	Cup	25
3956	5/8"	Cup	25
3957	3/4"	Cup	25
3958	7/8"	Cup	25
15212	15/16"	Cup	50
3960	1"	Cup	25
3961	1-1/8"	Cup	25
3962	1-7/32"	Cup	25
3963	1-1/4"	Cup	25
3964	1-3/8"	Cup	25
3965	1-1/2"	Cup	25
3966	1-5/8"	Cup	25
3967	1-3/4"	Cup	25
3968	1-7/8"	Cup	25
3969	1-15/16"	Cup	25
3971	2"	Cup	25

See page 149 for Metric Expansion Plugs. For an Assortment of Expansion Plugs see Kit No. 6067

## 14461

(Chry: 2534814)  
Plain



Battery Hold Down Bolt with Nut  
Size: 1/4"-20 x 7"  
Thread Length: 2"

UNIT PACKAGE: 10

## 8971

(Chry: 2074089)  
Plain



Inside Battery Hold Down Bolt with Nut  
Size: 1/4"-20 x 9"  
Thread Length: 2-1/4"

UNIT PACKAGE: 10

## 8963

(GM: 3688699)  
Plain



Battery Hold Bolt with Nut  
Size: 5/16"-18 x 8"  
Thread Length: 1"

UNIT PACKAGE: 10

## 10643

Zinc



Battery Hold down Bolt with Nut  
Size: 5/16"-18 x 12"  
Thread Length: 6"

UNIT PACKAGE: 10

## 10644

Plain



Battery Hold Down Bolt with Nut  
Size: 3/8"-16 x 10"  
Thread Length: 3"

UNIT PACKAGE: 10

## LOOKING FOR A CABINET OR RACK?

We have a variety of cabinets, racks and other organizational containers and items. Located in the green section.

The green section also contains several different types of assortments. Our assortments contain groups of items most commonly used together.

**7914**

Windshield reveal moulding tool



Used to remove windshield reveal moulding from retaining clips on GM vehicles with rubberless installations

UNIT PACKAGE: 1

**13574**

Glass Retainer Clip Installer



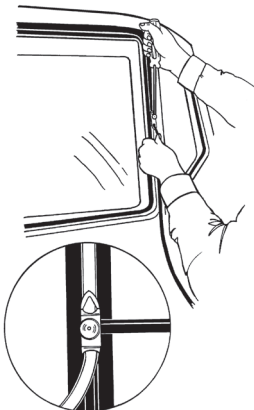
This tool reduces the risk of chips and scratches to glass windows put in by make shift tools. This tool is specifically designed to fit trim clips over the studs and virtually eliminates glass breakage. It also dispenses with the need to remove rubber-like sealant surrounding the studs.

A practical tool for placing trim retainer clips over headed studs welded around the body window shields and rear window openings.

UNIT PACKAGE: 1

**20906**

Windshield Locking Strip Tool



This tool is used when replacing the windshield, rear glass or sliding rear glass on vehicles with locking strips. The unique design allows the tip to swivel 90 degrees in either direction to work where other tools can't. Just select the tip with the opening that most closely fits the locking strip and then feed the locking strip into the eyelet. Overall length: 8-1/4"

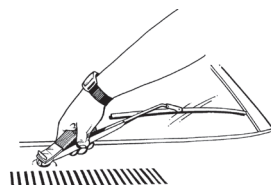
UNIT PACKAGE: 1

**20907**

Windshield Wiper Arm Remover



Makes wiper arm removal and replacement an easy job without damaging the vehicle finish. Simply place the "hook" under the arm base, lift and squeeze the wiper arm and tool handle together.



The wiper arm lifts right off.

Reverse the procedure to install a wiper arm.

Overall length: 6-7/8"

UNIT PACKAGE: 1

**7778**



For removing window crank handle retaining clips.

The clip remains in the handle after being "popped off".

Overall Size: 6-1/4"

UNIT PACKAGE: 1

**7999**



The Trim Pad Removing Tool is the first tool designed specifically to pull out the plastic trim pad fasteners used on GM cars. It reaches under the trim panel, supports and grips the plastic fastener, and lifts it without damage to the fastener or to the trim pad backboard. The Trim Pad Removing Tool is made of heat treated, high carbon steel and will work equally well on metal fasteners.

UNIT PACKAGE: 1

**7672**



Headliner Tool stuffs headlining in channel above doors. Stuffs upholstery, trim edges into tedious places.

Blunt edge of blade cannot damage material. Easy to use around curves and near corners.

UNIT PACKAGE: 1



**13575**



For tucking headlining and upholstery around windows and above doors and other hard to reach places. A sturdy tool with a slightly curved blade that has finished edges and rounded corners. Comfortable wood handle with eyelet hole through one end.

UNIT PACKAGE: 1

**15301**

Clip Removal Tool



The right tool for removing clips and retainers quickly and easily. Simply seat the tool on the shaft of the fastener and squeeze the handles together. Made of high carbon steel and heat treated for strength. Zinc plated with vinyl molded handle grips.

UNIT PACKAGE: 1

**13578**

Auto Trimmers & Upholsterers  
Combination Knife



Made of finest steel with both hook and pointed blade used for ripping seams. Cuts auto and home carpeting, vinyl, plastic and rubber.

Beechwood handle contoured to fit hand. A handy professional tool.

UNIT PACKAGE: 1

**17978**

Mini Plastic Scraper  
With Razor Blade



Scraper with razor sharp edge cuts or scrapes paint, stickers, cardboard, string, etc. Flip a latch and turn the razor blade over to safely store the scraper.

UNIT PACKAGE: 5

**13626**



A unique retractable scraper that takes the aggravation out of getting old stickers off car windshields and paint blotches off windows. The scraper is 7-7/8" when fully open and locked in position. The razor blade holder tilts the blade to give a better angle of attack in tight corners. The blade can be folded 180 degrees into the handle and locked when not in use, permitting it to be kept in a tool box safely. The blade can be replaced when worn out and the entire tool is compact and durable as well as economical.

UNIT PACKAGE: 1

**13625**

Single Edge Razor Blades  
For use with 13626 and  
General Purpose

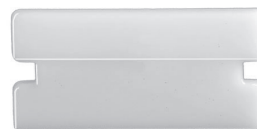


UNIT PACKAGE: 100

## Polypropylene Blades

Remove stickers from plastic-coated windshields without risk of scratching or cutting the windshield.

Made of polypropylene, these blades are also ideal for scraping many other surfaces in automotive, industrial and home applications. Use with tool 13626



**14543:** UNIT PACKAGE: 25

**14575:** UNIT PACKAGE: 100

**14576:** UNIT PACKAGE: 1,000

**20823**

Extra Long Sticker Scraper



Specially designed to access steep, sloping windshields and other hard-to-reach places. Excellent for corners and on curved surfaces. Supplied with 5 standard steel razor blades and 1 plastic blade. Use the plastic blade on laminated windows and plastic bumpers. Extra blades are stored in the handle. Heavy duty construction. Overall Length: 16"

UNIT PACKAGE: 1



**13572**



All purpose awl used in the installation of roof windows, windshield rubber and back glass. It is used to remove body clips, mouldings and for spring pulling and cotter pin extracting or for radiator hose removal.

Great for hard to reach places. Tempered end.

Hook: 1-1/4"

Blade: 4-1/2"

Overall Length: 8-1/2"

UNIT PACKAGE: 1

**13579**

Heavy Duty Scratch Awl



3-1/2" blade with rugged plastic handle.

UNIT PACKAGE: 1

**20903**

O-Ring and Seal Pick



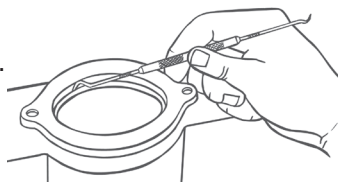
Quickly removes and installs O-Rings and seals.

Tips are angled for hard-to-reach areas typically found around brakes, air conditioning and transmissions.

The tips are hardened to stay sharp.

The handle is knurled for a sure grip.

Overall Length: 8-3/4"



UNIT PACKAGE: 1

**17088**



All purpose awl with an extra long hook. Use to remove mouldings, body clips, windshield seals, cotter pins and radiator hoses. Made of tough spring steel, heat treated, tempered and plated.

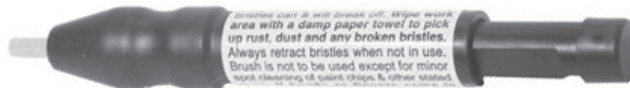
4-7/8" long blade with 2" long hook.

Overall length: 8"

UNIT PACKAGE: 1

**18335**

Prep Pen (Spot Sanding Pen) with Glass Fibers



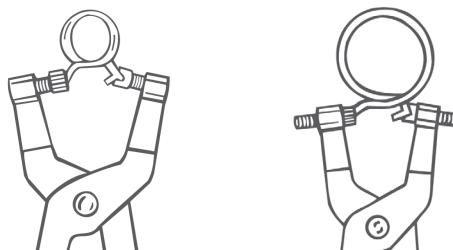
Thoroughly clean rust, dirt or wax from any tight corner, crevice or hard to reach spot with 20,000 glass fibers in a pen point. Fibers finer than human hair and stronger than steel when it comes to cleaning power.

Sand paper can be too rigid to directly contact and clean the contours of inside edges. Thus conventional sanding only cleans the high spots. The Prep Pen's glass fibers can be extended out (by turning) to ensure even the smallest recesses get cleaned.

UNIT PACKAGE: 1

**20902**

Constant Tension Band (Flat Band) Hose Clamp Pliers



Removes and installs hose clamps (Auveco part numbers 18127 - 18132) on heater and radiator hoses. Tips screw in and out to fit all sizes of clamps. Ratcheting lock mechanism holds the clamp in an open position for easy removal and installation. Tips can be switched to accommodate different applications. Offset jaws allow access to hard-to-reach areas.

UNIT PACKAGE: 1

# TOOLS

*Photos not actual size*

**Sec. 28**

**7657**

Hog Ring Plier



Straight Nose Spring Grip,  
holds rings in place for fast work.

UNIT PACKAGE: 1

**7658**

Hog Ring Plier

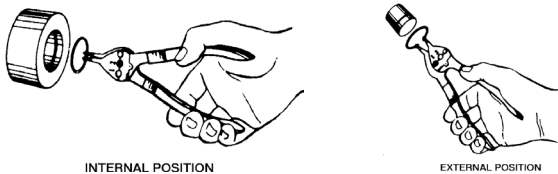


Offset Angle Nose for close  
to floor non-removable cushions.

UNIT PACKAGE: 1

## Convertible Retaining Ring Pliers

For Internal and External Retaining Rings



INTERNAL POSITION

EXTERNAL POSITION



**7909**

Use with  
Auveco Retaining Rings:  
8677 - 8678 External  
8688 - 8697 Internal  
8700 - 8709 External  
10116 - 10121 External

UNIT PACKAGE: 1

**7910**



Use with  
Auveco Retaining Rings:  
8679 - 8683 External  
8698 - 8699 Internal  
8710 - 8712 External  
10122 - 10129 External  
16743 - 16748 External

UNIT PACKAGE: 1

**20905**

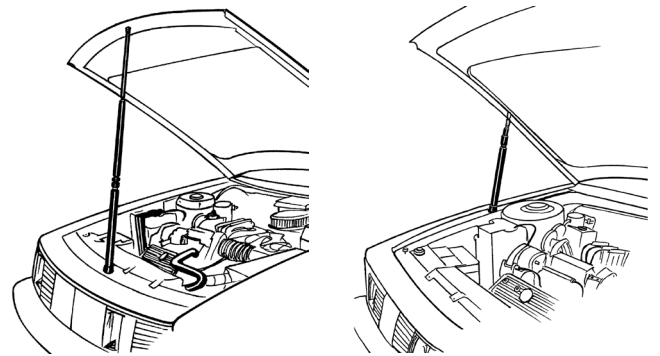
Hood Prop



Unique 3-Piece telescoping design allows a mechanic  
to hold open the hood in any desired position from  
18-1/2" to 46-3/4". It can be used either in the front  
of the vehicle or on the side for better access to the  
engine compartment. Also great for body or repair  
work on doors, trunk lids and hatchbacks.

Overall length: 18-1/2"

UNIT PACKAGE: 1



## Torx® Power Drive Bits

1" Shank

Auveco Part No.	Bit Size	Hex Size	For Screw Size	Unit Pkg.
<b>12472</b>	T-10	1/4"	No. 4	1
<b>11949</b>	T-15	1/4"	No. 6	1
<b>11950</b>	T-20	1/4"	No. 8	1
<b>12103</b>	T-25	1/4"	No. 10	1
<b>14913</b>	T-27	1/4"	No. 12, 1/4"	1
<b>12104</b>	T-30	1/4"	1/4"	1
<b>12105</b>	T-40	1/4"	5/16"	1
<b>14916*</b>	T-55	5/16"	1/2", 9/16", 5/8"	1

\*1-1/4" Shank



## Torx® Power Drive Bits

2" Shank

Auveco Part No.	Size	For Screw Diameter	Unit Pkg.
<b>12474</b>	T-15	6	1
<b>12475</b>	T-20	8	1
<b>12477</b>	T-30	1/4"	1